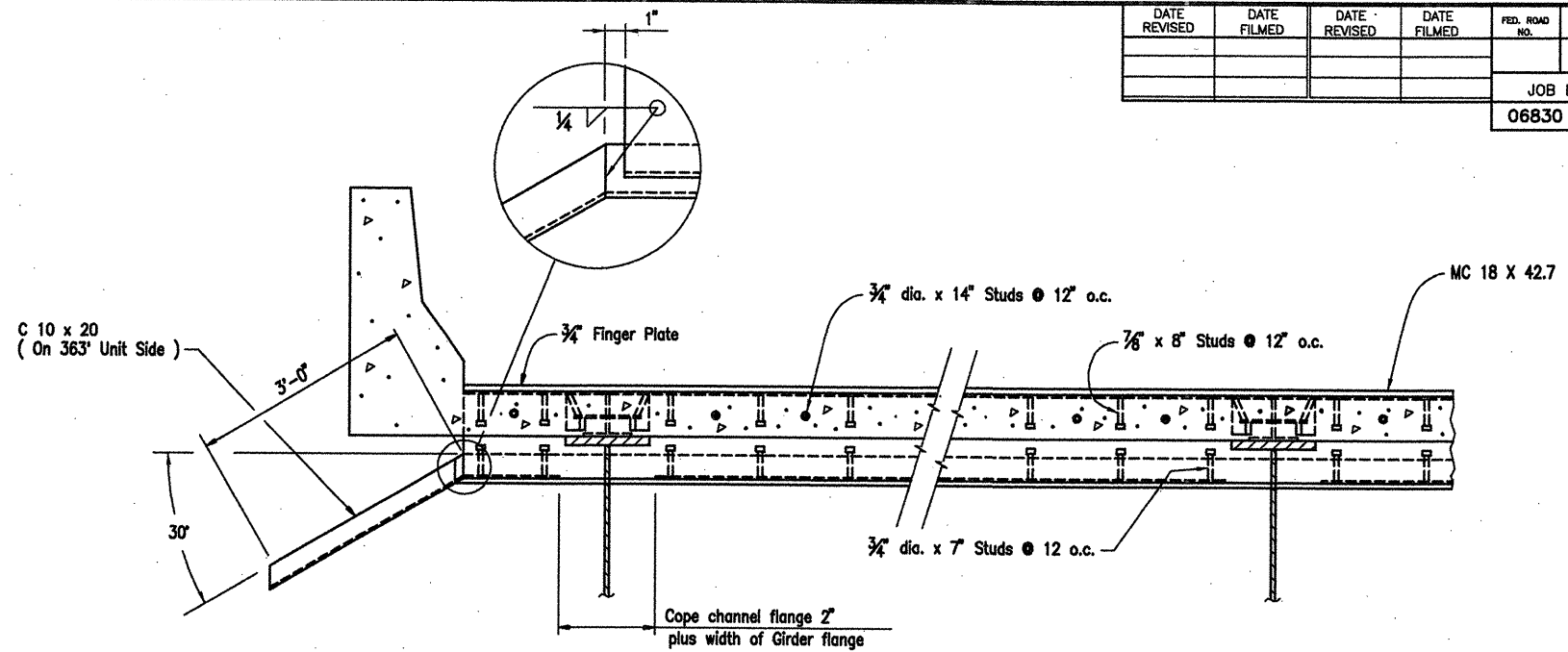
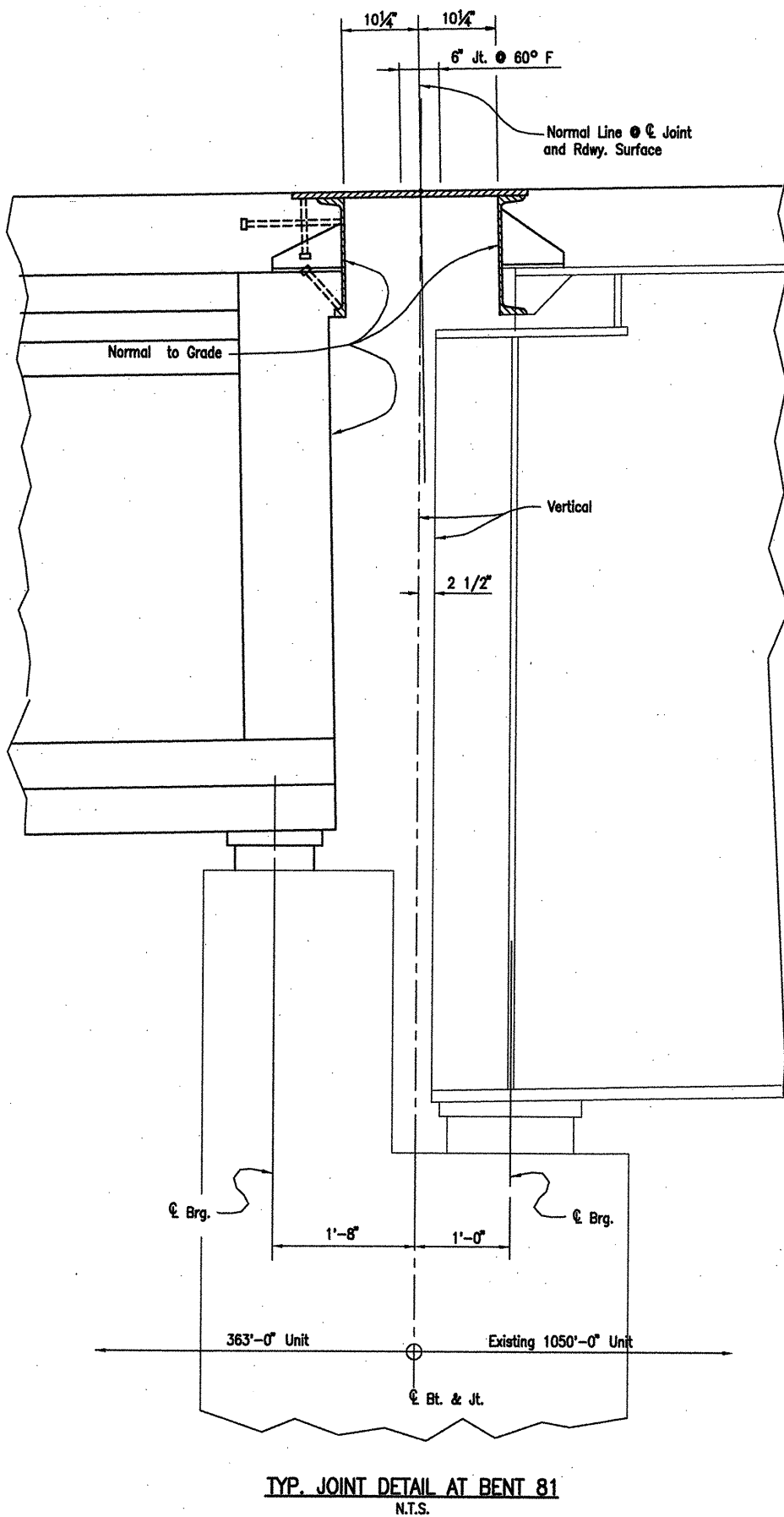
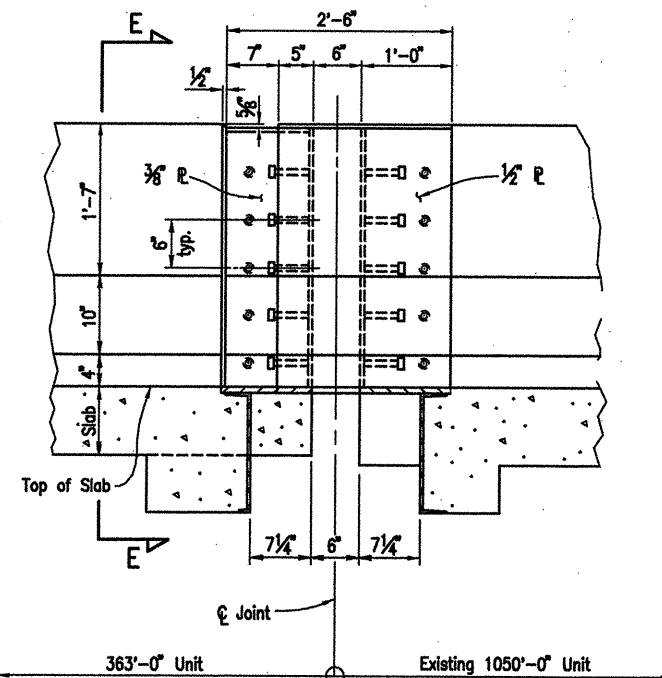


COMPANY\1999 JOBS\99-044 AHTD\WHITERIVER\JOB 110395\expjoint5 AHT1 ACAD SCALE: 1"=1'-0"

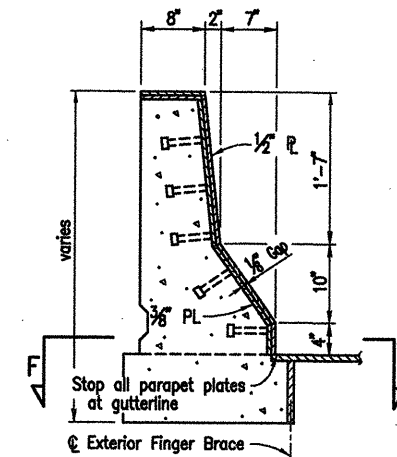


PART RDWY. SECTION AT END OF UNIT
N.T.S.
(Shown from 1050' Unit Side of Joint)

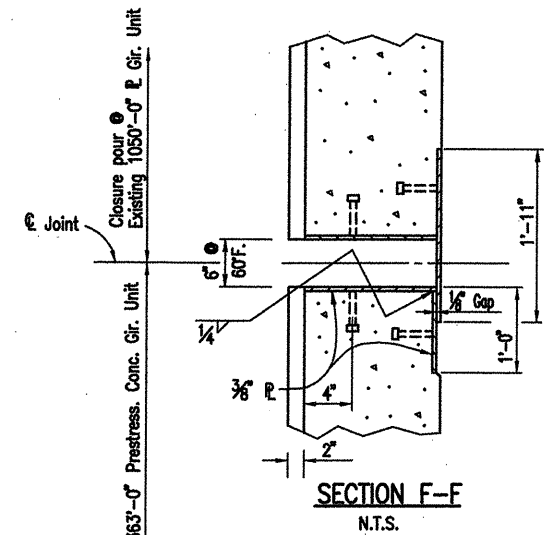


SECTION D-D
N.T.S.

Note: For Location of Section D-D, See Dwg. No. 47098



SECTION E-E
N.T.S.



Note: The 1/2" studs shall be granular flux filled, solid fluxed, or equal and automatically end welded to the PL's in accordance with recommendations of the manufacturer.

ALTERNATE NO. 1

DETAILS OF EXPANSION JOINTS
(SHEET 5 OF 5)

WHITE RIVER STR. & APPRS.
(CLARENDON) (PH III) (F)
MONROE COUNTY

ROUTE 79 SEC. 13

ARKANSAS STATE HIGHWAY COMMISSION
LITTLE ROCK, ARK.

Engstrom/Modjeski and Masters, Inc.

DRAWN BY: PMR DATE: Nov. 07 FILENAME: b1103951_e05
CHECKED BY: GPT DATE: Nov. 01 SCALE: 1"=1'-0"
DESIGNED BY: YO/HJE DATE: Nov. 01
BRIDGE NO. 06830 DRAWING NO. 47099

